

# MARINE PRODUCTS

## BUILT FOR MARINA LIFE

STRONG • DURABLE • IMPACT & UV RESISTANT • EASY TO INSTALL

### DOCK BOARDING STEPS

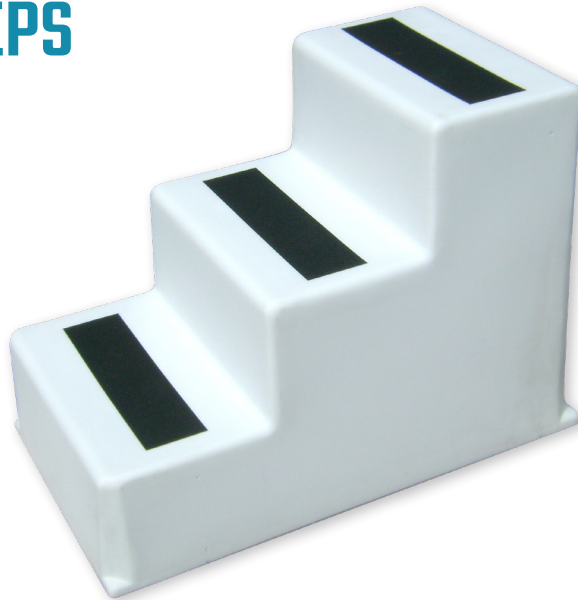
- Compact flush mounting
- Minimized footprint
- Heavy-duty polyethylene construction
- Sleek design
- Handrail available

#### MODEL DS-200 2 STEPS

- 23½" long x 20" wide x 17" high

#### MODEL DS-300 3 STEPS

- 35" long x 20" wide x 25½" high



### MARINA TRASH & RECYCLING BINS

- 30 gallon capacity
- Hinged lid design deters birds and animals
- Heavy duty polyethylene construction
- Stream-lined design
- Strong nylon hinges
- Stainless steel hardware



**WATER/HOLDING TANKS**  
**BOUYS • BARRIER FLOATS**  
**DOCK CARTS • MARINE LIGHTS**

BOATING & MARINA PRODUCTS